

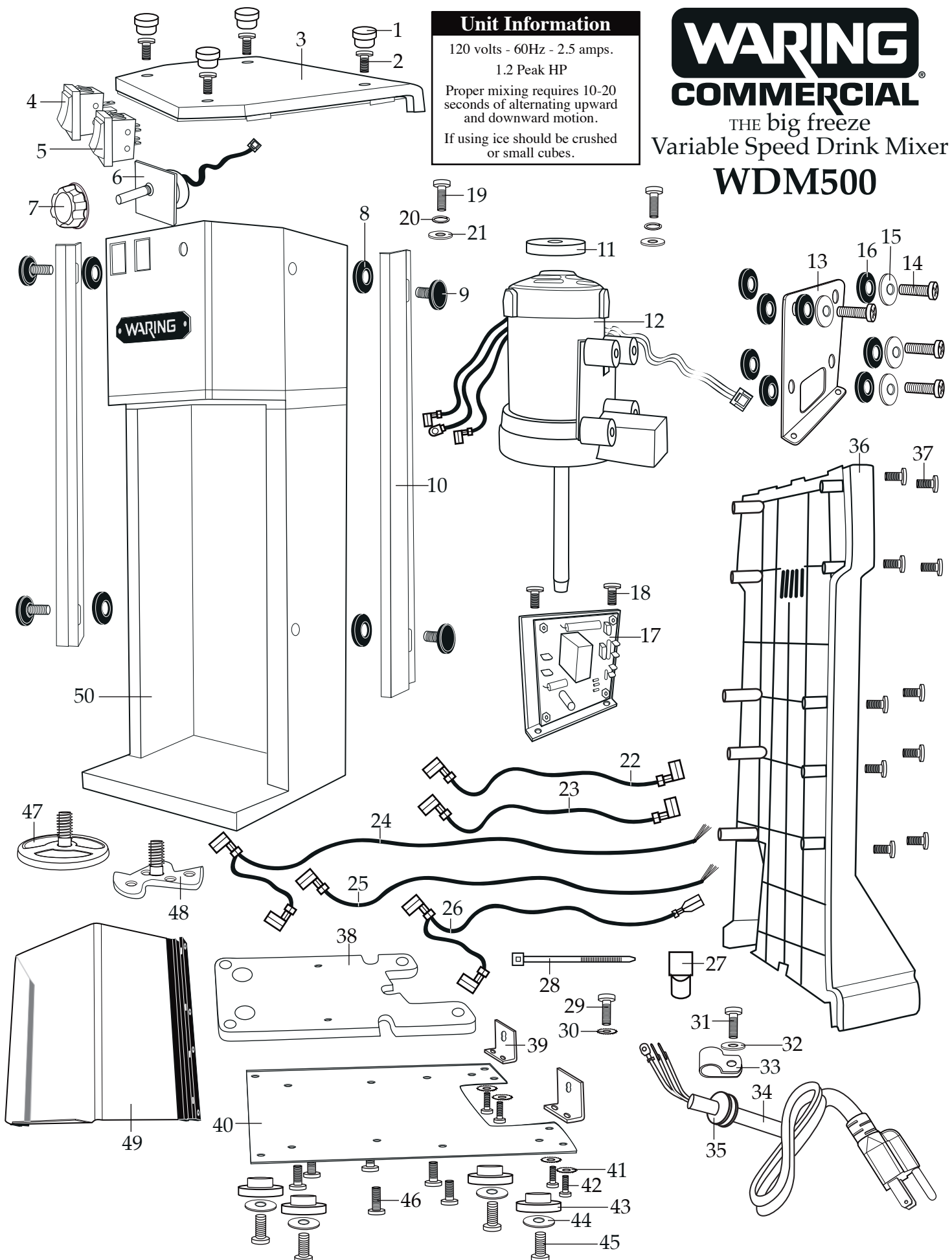
WARING COMMERCIAL®

THE big freeze
Variable Speed Drink Mixer

WDM500

Unit Information

120 volts - 60Hz - 2.5 amps.
1.2 Peak HP
Proper mixing requires 10-20
seconds of alternating upward
and downward motion.
If using ice should be crushed
or small cubes.



Illustration#	Part#	Description
1	030685	Hole Plugs (4 required)
2	033901	Screw (4 required)
3	036022	Top Cover
4	036023	Start/Stop Switch
5	036024	Pulse Switch
6	036025	Potential Meter
7	036026	Speed Control Knob
8	036027	Rubber Washer (4 required)
9	036028	Track Thumb Screw (4 required)
10	036029	Track Set (1 left and 1 right)
11	030694	Top Motor Mount
12	036030	Motor Assembly
13	036031	Motor Holder
14	036032	Screw (4 required)
15	033897	Washer (4 required)
16	036027	Rubber Washer (4 required)
17	036033	PCBA Board Assembly
18	033901	Screw (2 required)
19	030686	Screw (2 required)
20	030714	Spring Washer (2 required)
21	030702	Washer (2 required)
22	036034	11.5" Blue Lead Assembly
23	036035	10.25" Yellow Lead Assembly
24	036036	Black Double Lead Assembly
25	036037	23.5" White Lead Assembly
26	036038	Red Double Lead Assembly
27	012409	Crimp Connector (2 required)
28	013731	Cable Ties (7 required)
29	030686	Screw
30	030707	Lock Washer

Illustration#	Part#	Description
31	030686	Screw
32	030702	Washer
33	036039	1/4 Cord Clamp
34	036040	Cord
35	031984	Cord Sleeve
36	036041	Back Cover
37	033901	Screw (10 required)
38	036042	Bottom Plate Weight
39	036043	Bottom Plate Bracket (2 required)
40	036044	Bottom Plate
41	030707	Lock Washer (4 required)
42	036050	Screw (4 required)
43	036046	Foot (4 required)
44	030696	Washer (4 required)
45	036047	Screw (4 required)
46	033901	Screw
	030686	Screw
47	036015	Metal Agitator (hard ice cream)
48	036048	Plastic Agitator (soft ice cream & gelato)
49	036049	Splash Shield
50	037426	Housing

Note: Left Track and Right Track are different. The Left Track has a pin on the bottom and the Right Track has a pin on the top. This is to ensure that the splash shield is secured to the housing for safe operation.

The customer needs to see Splash Shield Assembly located in the WDM500 manual for instructions.