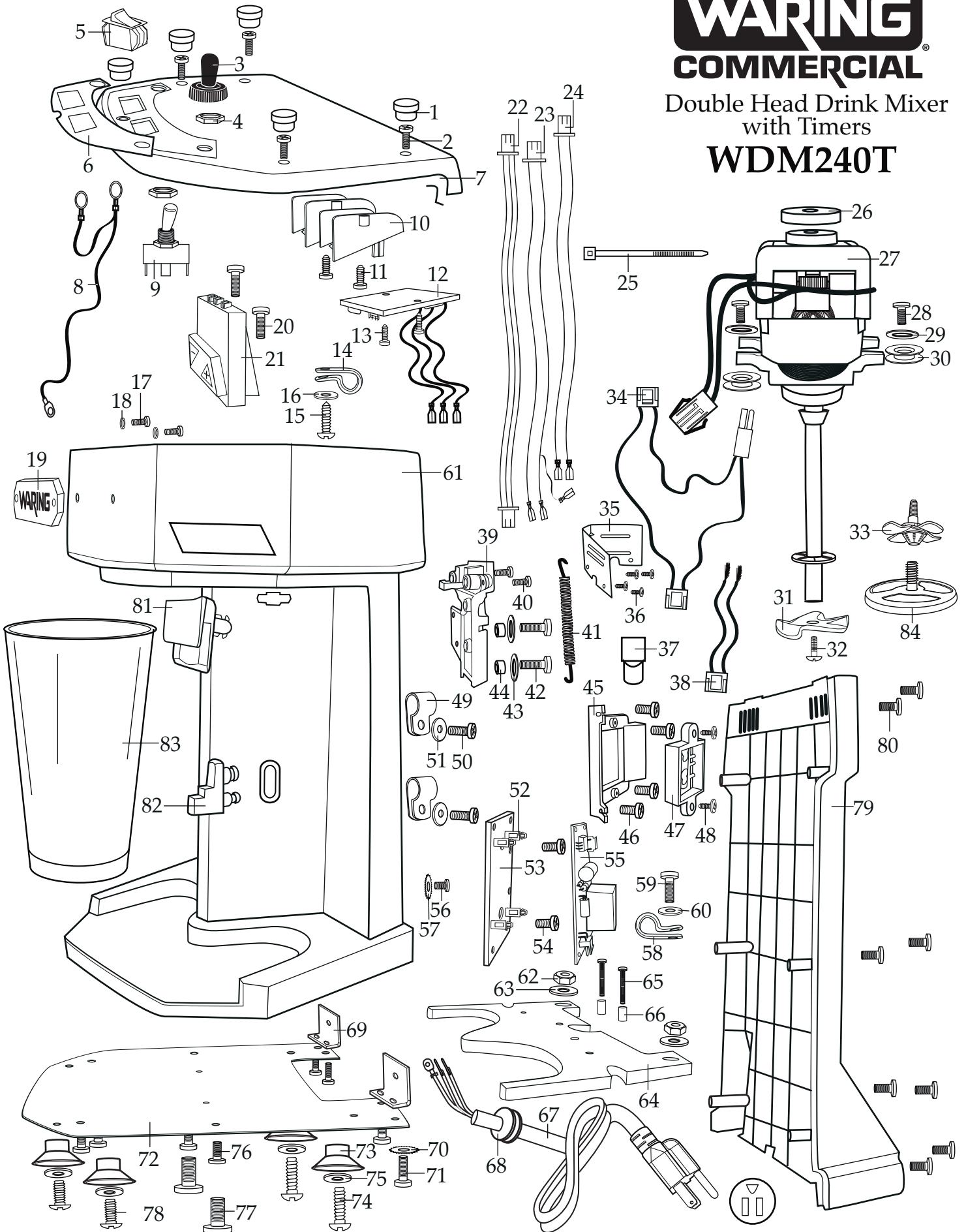


# WARING COMMERCIAL

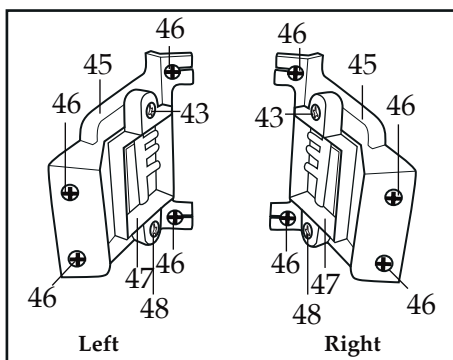
Double Head Drink Mixer  
with Timers

## WDM240T

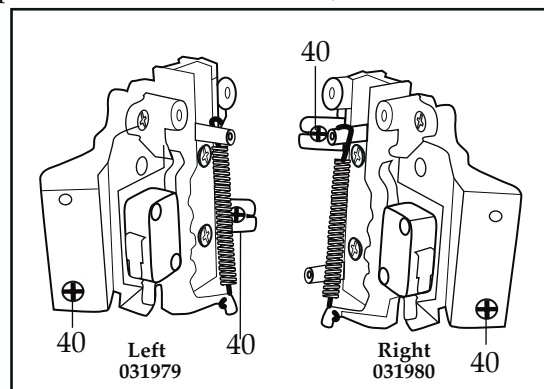


<b>Illustration#</b>	<b>Part#</b>	<b>Description</b>
1	030685	Rubber Hole Plug (5 required)
2	033901	Screw (5 required)
3	030682	Switch Boot (2 required)
4	016236	Hex Nut (2 required for each toggle switch)
5	030683	Rocker Switch (2 required)
6	034356	Switch Plate
7	034354 034355	Top Housing Top Housing with PC Holders
8	034357	Ground Lead Harness
9	033899	Toggle Switch (2 required)
10	034358	PC Holder (2 required)
11	033886	PC Holders Screw (2 required for each PC holder)
12	033889	PC Speed Control Board (2 required)
13	033890	PC Board Screw (2 required for each PC board)
14	030708	5/16" Cable Clamp (2 required)
15	033900	Top Housing Cable Clamp Screw (2 required)
16	030702	Washer (2 required)
17	030691	Name Plate Badge Screw (2 required)
18	030690	Name Plate Badge Washer (2 required)
19	030689	Name Plate Badge
20	033901	Screw (2 required)
21	036350	Timer Control (2 required)
22	036533	24.5" Red-Black-Orange Lead Harness (2 required)
23	036534	21.5" Black-Red-Red Lead Harness w/Terminals (2 required)
24	036357	20.5" Black-Black Lead Harness w/Terminals (2 required)
25	013731	Wire Tie (10 required)
26	030694	Top Motor Mount (2 required)
27	033893	Motor (2 required)
28	033901	Screw (2 required for each motor)
29	030696	Washer (2 required for each motor)
30	030697	Side Motor Mounts (2 required for each motor)
31	030716	Solid Agitator (1 required for each motor)
32	029291	Solid Agitator Screw (1 required for each motor)

Illustration#	Part#	Description
33	029292	Butterfly Agitator (1 required for each motor)
34	033892	Blue, White and Black Lead Harness (2 required)
35	034359	Actuator Retaining Bracket
36	031990	Actuator Retaining Bracket Screw (4 required)
37	019123	Large Crimp Connector (2 required)
38	036354	Black-White Lead Harness (2 required)
39	031979	Left Actuator Switch Assembly (see View 2)
	031980	Right Actuator Switch Assembly (see View 2)
40	033901	Screw (2 required each Switch Assembly see View 2)
41	030701	Spring (2 required)
42	030686	Actuator Switch Assembly Screw (2 required)
43	030702	Actuator Switch Assembly Washer (2 required)
44	030703	Actuator Switch Assembly Sleeve (2 required)
45	031982	Left and Right Cup Support Locking Bracket (see View 3)
46	033901	Screw (4 required on both right and left brackets see View 3)
47	030704	Cup Support Locking Assembly (2 required see View 3)
48	031981	Left and Right Locking Assembly Screw (2 required see View 3)
49	030708	5/16" Cable Clamp (2 required)
50	030686	Screw (2 required)
51	030702	Washer (3 required)
52	033881	Press Lock Stand Off (4 required for each power supply board)
53	034303	PCBA Holder (2 required)
54	033969	Screw (2 required for each PCBA holder)



View 3  
Looking into unit with back cover off at cup holder brackets.



View 2  
Looking into unit with back cover off at actuator switches with brackets.

<b>Illustration#</b>	<b>Part#</b>	<b>Description</b>
55	036352	Power Supply Board (2 required)
56	030706	Ground Screw
57	030707	Ground Lock Washer
58	036039	1/4" Cord Cable Clamp
59	030686	Cord Cable Clamp Screw
60	030702	Cord Cable Clamp Washer
61	036538	Front Housing
62	033898	Back Foot Hex Nut (2 required)
63	033897	Back Foot Large Washer (2 required)
64	034361	Weight Plate
65	036536	Screw (2 required for PCBA holder attached to weight plate)
66	036537	Spacer (2 required for PCBA holder attached to weight plate)
67	031985	Cord
68	031984	Strain Relief
69	033895	Bottom Plate Bracket (2 required)
70	033969	Screw (2 required for each bracket)
71	033970	Lock Washer (2 required for each bracket)
72	034362	Bottom Plate
73	030719	Foot (4 required)
74	033894	Back Foot Screw (2 required)
75	030696	Foot Washer (4 required)
76	033901	Bottom Plate Screw (4 required)
77	033902	Weight Plate Screw (2 required)
78	031987	Front Foot Screw (2 required)
79	034360	Back Housing
80	033901	Back Housing Screw (8 required)
81	030717	Cup Actuator (2 required)
82	030718	Cup Support (2 required)
83	030883	Container (2 required)
84	036627	Wheel Agitator