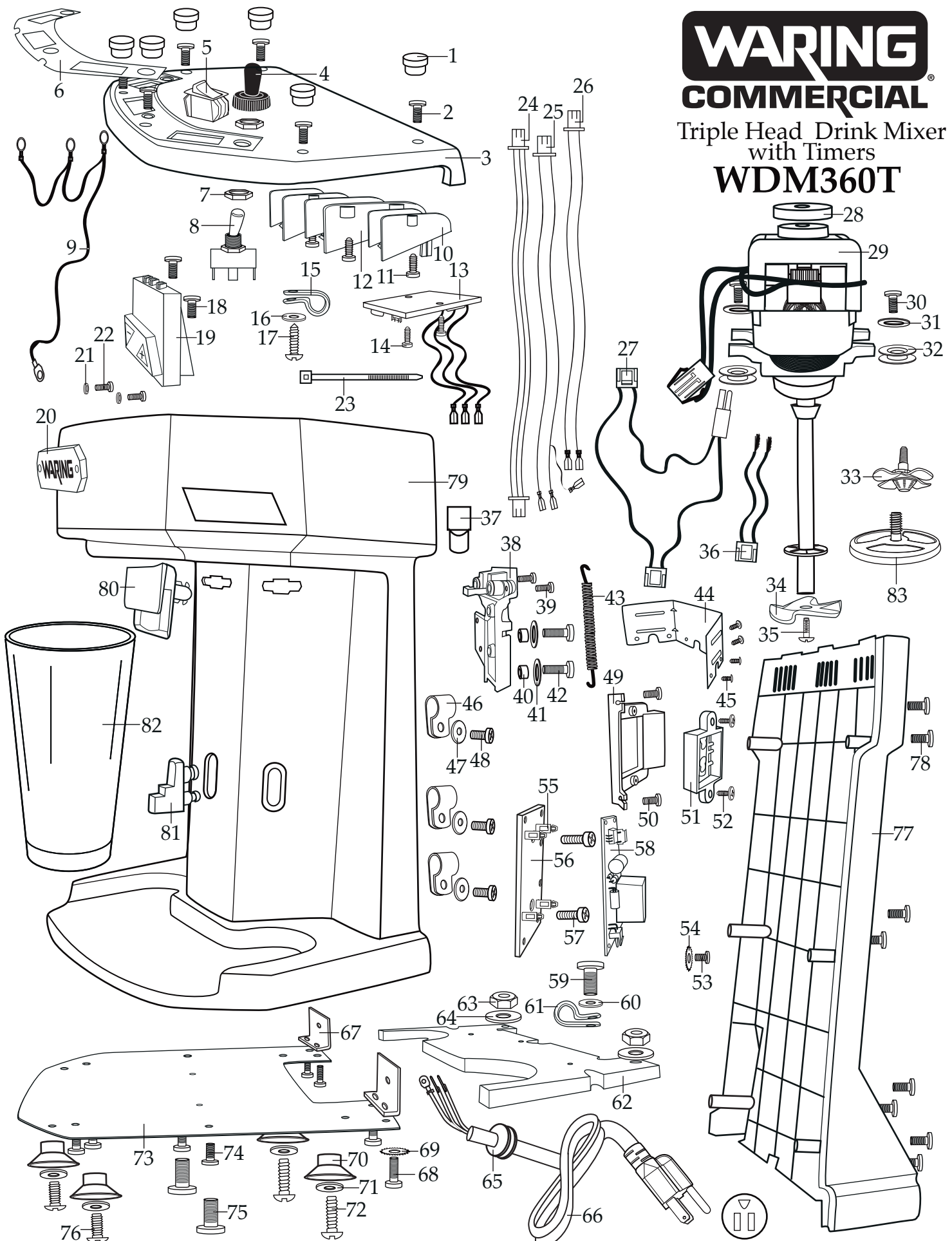


# WARING COMMERCIAL

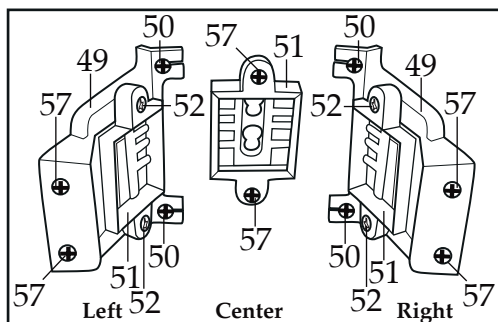
Triple Head Drink Mixer  
with Timers

## WDM360T

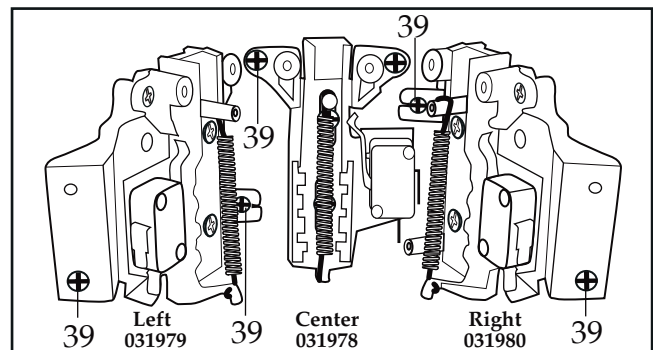


<b>Illustration#</b>	<b>Part#</b>	<b>Description</b>
1	030685	Rubber Hole Plug (6 required)
2	033901	Screw (6 required)
3	033883	Top Housing
	033882	Top Housing with PC Holders
4	030682	Switch Boot (3 required)
5	030683	Rocker Switch (3 required)
6	031975	Switch Plate
7	016236	Hex Nut (2 required for each toggle switch)
8	033899	Toggle Switch (3 required)
9	033887	Ground Lead Harness
10	033884	Small PC Speed Control Board Holder (2 required)
11	033886	Screw for PC Speed Control Board Holders (5 required)
12	033885	Large PC Speed Control Board Holder
13	033889	PC Speed Control Board (3 required)
14	033890	PC Speed Control Board Screw (2 required for each board)
15	036039	1/4 Cable Clamp (3 required)
16	030702	Washer (3 required)
17	033900	Screw (3 required)
18	033901	Screw (2 required for each timer control)
19	036350	Timer Control (3 required)
20	030689	Name Plate Badge
21	030690	Name Plate Badge Washer (2 required)
22	030691	Name Plate Badge Screw (2 required)
23	013731	Wire Tie (12 required)
24	036533	24.5" Red-Black-Orange Lead Harness (3 required)
25	036534	21.5" Black-Red-Red Lead Harness w/Terminals (3 required)
26	036357	20.5" Black-Black Lead Harness w/Terminals (3 required)
27	033892	Blue, White and Black Lead Harness (3 required)
28	030694	Top Motor Mount (3 required)
29	033893	Motor (3 required)
30	033901	Screw (2 required for each motor)
31	030696	Washer (2 required for each motor)
32	030697	Side Motor Mounts (2 required for each motor)

Illustration#	Part#	Description
33	029292	Butterfly Agitator (3 required)
34	030716	Solid Agitator (3 required)
35	029291	Screw (3 required)
36	036354	Black-White Lead Harness (3 required)
37	019123	Crimp Connector (2 required)
38	031978 031979 031980	Center Actuator Switch Assembly (see View 2) Left Actuator Switch Assembly (see View 2) Right Actuator Switch Assembly (see View 2)
39	033901	Screw (2 required each switch assembly see View 2)
40	030703	Center Actuator Switch Assembly Sleeve (2 required on each actuator switch assy.)
41	030702	Center Actuator Switch Assembly Washer (2 required on each actuator switch assy.)
42	030686	Center Actuator Switch Assembly Screw (2 required on each actuator switch assy.)
43	030701	Spring (3 required)
44	031989	Actuator Retaining Bracket
45	031990	Actuator Retaining Bracket Screw (6 required)
46	030708	5/16 Cable Clamp (3 required)
47	030702	Washer (3 required)
48	030686	Screw (3 required)
49	031982	Left and Right Cup Support Locking Bracket (see View 3)
50	033901	Screw (2 required on both right and left brackets see View 3)
51	030704	Cup Support Locking Assembly (3 required see View 3)
52	031981	Left and Right Locking Assembly Screw (2 required see View 3)
53	030706	Ground Screw
54	030707	Ground Lock Washer



View 3  
Looking into unit with back cover off at cup holder brackets.



View 2  
Looking into unit with back cover off at actuator switches with brackets.

<b>Illustration#</b>	<b>Part#</b>	<b>Description</b>
55	033881	Press Lock Stand Off (4 required for each power supply board)
56	034303	PCBA Holder (3 required)
57	033969	Screw (2 required for each PCBA holder)
58	036352	Power Supply Board (3 required)
59	033902	Cord Cable Clamp Screw
60	030696	Cord Cable Clamp Washer
61	036039	1/4 Cord Cable Clamp
62	033896	Weight Plate
63	033898	Back Foot Hex Nut (2 required)
64	033897	Back Foot Large Washer (2 required)
65	031984	Strain Relief
66	031985	Cord
67	033895	Bottom Plate Bracket (2 required)
68	033969	Screw (2 required for each bracket)
69	033970	Lock Washer (2 required for each bracket)
70	030719	Foot (4 required)
71	030696	Foot Washer (4 required)
72	033894	Back Foot Screw (2 required)
73	031988	Bottom Plate
74	033901	Bottom Plate Screw (4 required)
75	033902	Weight Plate Screw (2 required)
76	031987	Front Foot Screw (2 required)
77	031983	Back Housing
78	033901	Back Housing Screw (8 required)
79	036535	Front Housing
80	030717	Cup Actuator (3 required)
81	030718	Cup Support (3 required)
82	030883	Container (3 required)
83	036627	Wheel Agitator