

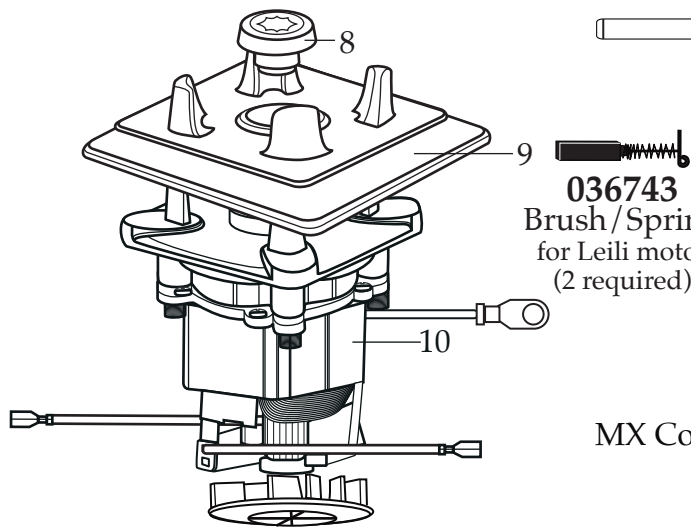
# WARING COMMERCIAL

Xtreme Blender with Electronic Membrane  
Keypad and 48 oz. Raptor Container

## MX1050TXP

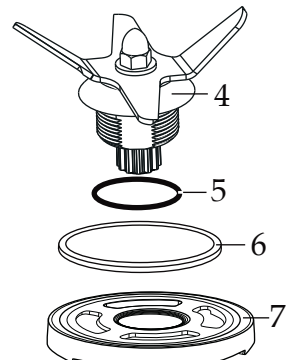
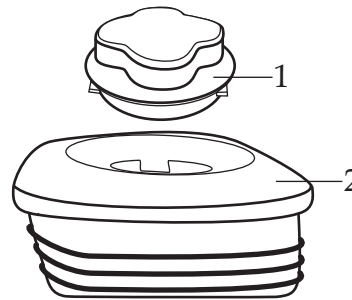
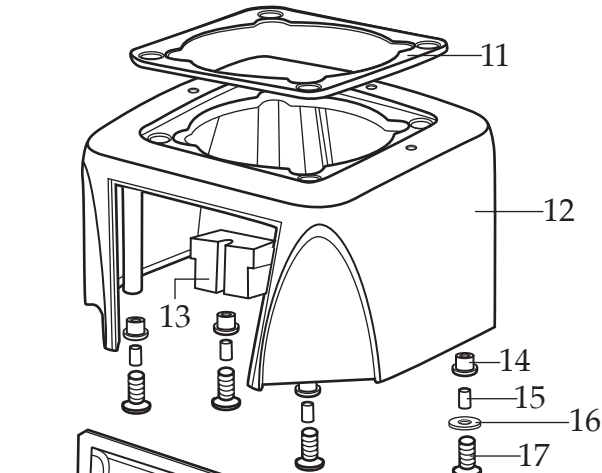
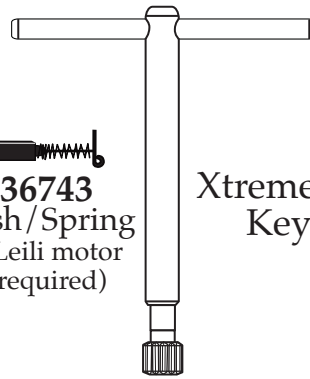
### Unit Information

Limited 3 Year Motor Warranty  
Two Year Parts & Labor  
60Hz - 13 Amps  
Height 19" - Weight 15 lbs.  
3 HP Motor  
30,000+ RPM's  
One Piece Dishwasher Safe  
Removable Jar Pad

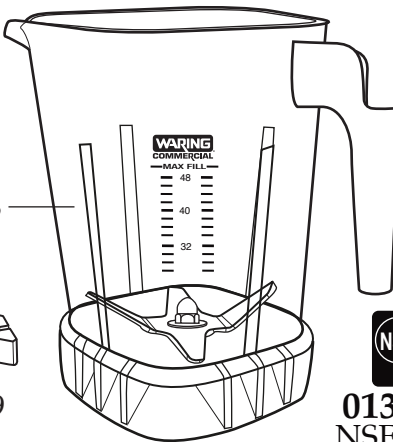
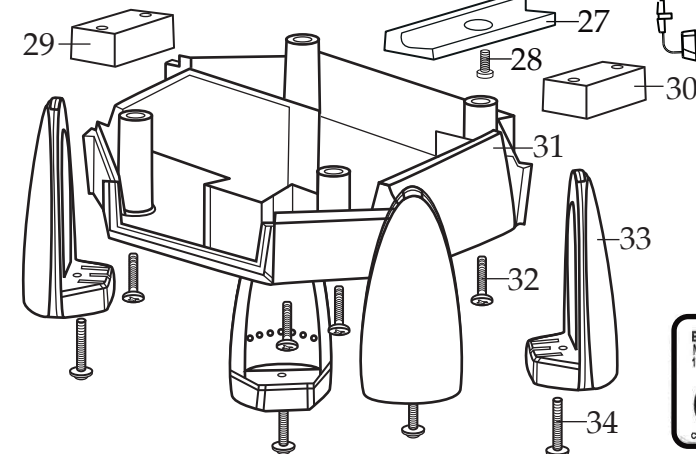
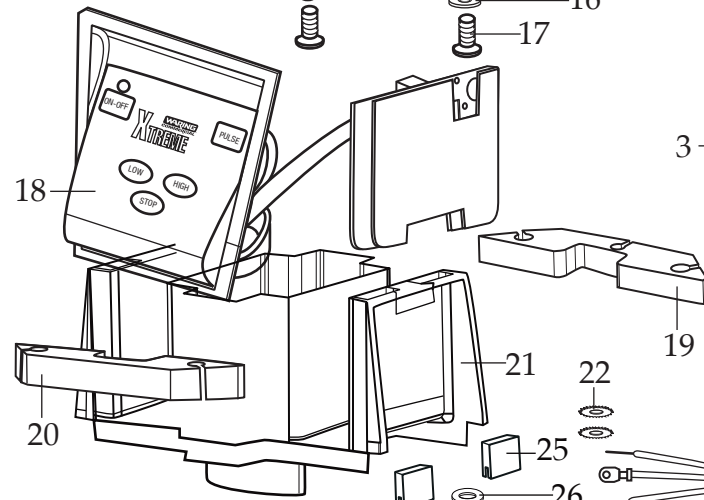


**036743**  
Brush/Spring  
for Leili motor  
(2 required)

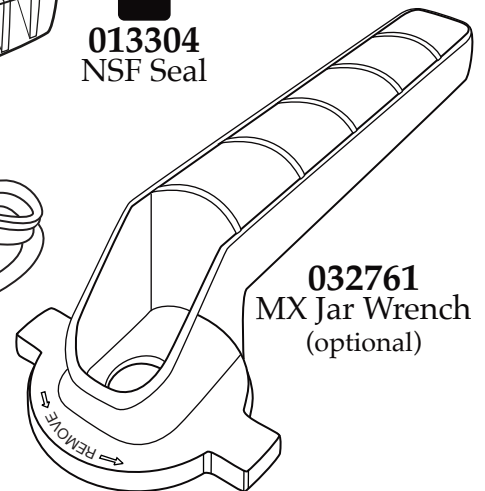
**503351**  
MX Coupling Wrench  
(optional)



**030889**  
Blending Assembly Kit



**NSF**  
**013304**  
NSF Seal



**NEMA 5-15**



Date Code Location  
YY|MM|DD  
year year | month month | day day

Illustration#	Part#	Description
1	026425-E	Jar Lid Cover
2	026424-V	Jar Lid
3	030888	48 oz. Stackable Raptor Container ONLY
	503439	48 oz. Stackable Raptor Container with Blending Assembly
4	503397	Blade Assembly
5	024271	Bearing Holder O Ring
6	024268	Rubber Nut Gasket
7	029631	Bearing Nut
8	503601	Sq. Drive Coupling with Adapter <i>(on units after 3/29/2022)</i>
	503604	Sq. Drive Coupling with Adapter 2 Gen <i>(changed after 5/7/2021)</i>
	028538	Drive Coupling
9	026442	Jar Pad
10	035396	Leili Motor without Sensor <i>(on units after 7/27/2017)</i>
	028100	ECM Motor without Sensor <i>(obsolete)</i>
11	038278	Dampening Plate Gasket <i>(on unit after 8/25/2022)</i>
	026437	Dampening Plate Gasket
12	028032-09	Top Housing /black
13	028541	Motor Foam (2 required)
14	026439	Dampening Plate Bushing (4 required)
15	038486	Dampening Plate Sleeve (4 required <i>on units after 8/25/2022)</i> )
	026453	Dampening Plate Sleeve (4 required)
16	026459	Washer
17	028929	Sems (4 required)
18	036396	Control Panel with Interlock <i>(on units after 2/7/2019)</i> comes with key board-main board
	029809	Soft Start Control Panel (use 036396)
19	028248	Top Housing Foam Rear Baffle
20	028249	Top Housing Foam Front Baffle
21	036814	Motor Housing 2.28" <i>(on units after 5/7/2019)</i>
	028240-67	Motor Housing <i>(on units after 7/27/2017)</i>
	028240	Motor Housing
22	002943	Washer (2 required)
23	026925	Cord Set
24	007556	Strain Relief
25	034900	PCB Cushion (2 required <i>on units after 7/18/2019)</i> )
26	037232	Neoprene Washer <i>(on units after 7/18/2019)</i>
27	037007	PCB Mounting Bracket <i>(on units after 7/18/2019)</i>

Illustration#	Part#	Description
28	013768	Screw (on units after 7/18/2019)
29	028247	Bottom Housing Foam Baffle
30	028542	Foam Baffle
31	028241-09-X	Bottom Housing /black
32	012505	Screw (4 required)
33	026430	Corner Post (4 required)
34	028928	Sems (4 required)

